

CHAMOT

Recombinant SCF, Human, GMP

CM171-100HPG
CM171-1000HPG



CHAMOT

喬默生物技術(上海)有限公司
CHAMOT BIOTECHNOLOGY CO., LTD.

CONTENT

1 产品简介

2 产品组成

3 产品储存

4 产品使用

5 产品规范

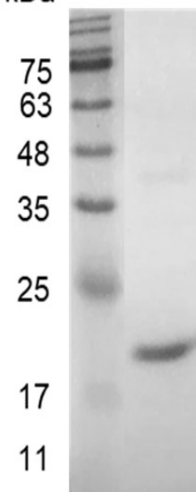
Recombinant SCF, Human, GMP

编号:	CM171-100HPG CM171-1000HPG	规格:	100 µg 1 mg
类别:	重组蛋白	应用:	Functional Assay

产品简介

描述: Stem Cell Factor (SCF) is a stromal cell-derived cytokine synthesized by fibroblasts and other cell types. SCF promotes proliferation and early differentiation of cells at the level of multipotential stem cells. SCF is a growth factor important for proliferation, and differentiation of hematopoietic stem cells. One of its roles is to change the BFU-E (burst-forming unit-erythroid) cells, which are the earliest erythrocyte precursors in the erythrocytic series, into the CFU-E (colony-forming unit-erythroid).

kDa



来源: *Escherichia coli*.
Animal-free reagent and laboratory.
Manufactured and tested under GMP guideline.

SDS-PAGE analysis of recombinant SCF ,
Human, GMP

纯度: >98% as determined by SDS-PAGE analysis.

生物学活性: Measure by its ability to induce TF-1 cells proliferation. The ED₅₀ for this effect is <5 ng/mL. The specific activity of recombinant human SCF is > 5 x 10⁵ IU/mg.

内毒素检测: <0.05 EU per 1 µg of the protein by the LAL method.

蛋白序列: MEGICRNRVTNNVKDVTCLVANLPKDYMITLK
YVPGMDVLPSCWCWISSEMVVQLSDSLTDLLDKF
SNISEGLSNYSIIDKLVNIVDDLVECVKENS SKD
LKKSFKSPEPRLFTPEEFFRIFNRSIDAFKDFVVA



SETSDCVVSSTLSPEKDSRVSVTKPFMLPPV A
with polyhistidine tag at the C-terminus.

产品组成

成分: 从含有 1X PBS, pH 7.4溶液中冻干的蛋白质,
无任何动物源性成分.

产品储存

储存: -20°C冻干粉保存 1 年.
运输: 蓝冰.

产品使用

- 1、开盖前, 建议3000-3500rpm离心5min。
- 2、推荐使用无菌水重悬冻干粉, 溶液浓度不低于500µg/mL, 并室温静置至少20min以充分溶解。勿涡旋剧烈振荡。
- 3、重悬后的溶液, 2-8无菌保存不超过1周。
- 4、如需长期保存, 推荐使用无菌的含载体蛋白(如0.1%BSA、10%FBS 或5%HSA)的溶液进一步稀释(不低于10ug/mL)后分装保存, -20至-80无菌保存3到6个月。无血清实验需求时, 可更换为 5%海藻糖溶液作为载体。避免反复冻融。

产品规范

CHAMOT GMP recombinant proteins are manufactured in ISO 13485:2016 and GMP certified facility.
The processes include:

- ★Testing and traceability of raw material
- ★Records of the maintenance and equipment calibration
- ★Personnel training records
- ★Batch-to-batch consistency
- ★Documentation of QA control and process changes
- ★Manufactured and tested under an ISO 13485:2016 certified quality management system
- ★Stability monitor of product shelf-life

WB=Western Blot; IP=Immunoprecipitation; IF=Immunofluorescence; IHC=Immunohistochemistry;
FACS=Fluorescence activated Cell Sorting; FA=Functional Assay

CHAMOT Biotechnology (Shanghai) Co., Ltd.

For Research Use Only. Not for use in diagnostic or therapeutic procedures